

**Our mission is: To engage the community through activities and awareness
to conserve a truly unique naturalized urban park.**

www.friendsoffishcreek.org

PO Box 2780 Stn M Calgary, Alberta T2P 2M7 403-238-3841

Volume 25, Issue 1
Winter 2020

**Dedicate an
Anniversary
Brick today!
See page 4 for
more info!**

**12 WEEK
SPRING BIRDING
COURSE RUNS
MARCH 30 -
JUNE 28, 2020**



SPRING BIRDING COURSE

Spring is a truly amazing time to see, hear, and learn about hundreds of bird species in Fish Creek Provincial Park! During the spring months, migratory birds will be returning from their far off wintering grounds and many new arrivals will be hatching. The Spring Birding Course is perfect for anyone who wants to learn about birds and it provides an amazing opportunity for families to enjoy nature in Fish Creek Provincial Park. Experienced birder David Mitchell and over 30 volunteers lead these courses.

Start times Mon - Thurs: 9:15 am. Sat: 9:00 am, Sun: 7:30 am, 9:00 am or 1:15 pm

Fee: Once a week outing, Friends Members: \$60.00, Non-members: \$100.00

Twice a week outings, Members: \$100.00, Non-members: \$150.00. Youth 16 years and younger \$5.00 with registered adult. Registration Required. For more information or to register visit

www.friendsoffishcreek.org/programs/birding-course

Fortser's Tern, Ken Pride

Also in this Issue:

Page 2: Fish Creek Speaker Series
Quiz Question

Page 3: New Staff Member
Kindful

Page 4: Brick Pathway
Fish Creek Community Showcase

Page 5: Volunteer Appreciation Dinner

Page 6: Friends of Fish Creek Truck
Nature Calgary

Page 7: Rock Dam Project Update

Page 9: Volunteer Impact

Page 10: Planned Giving

Page 11: Membership Renewal

Page 12: Supporters, Quiz Answer,
Online Store



FISH CREEK SPEAKER SERIES

Starting in January 2019, the Fish Creek Speaker Series admission fee has increased from \$5.00 to \$10.00.

Friends of Fish Creek members will continue to receive free admission. Youth 16 years of age or younger can attend free of charge, but must be accompanied by a registered adult. These fascinating and informative presentations take place from January - June and September - November at the Fish Creek Environmental Learning Centre at Shannon Terrace in Fish Creek Provincial Park (13931 Woodpath Rd. SW, access via 130 Ave. SW and 37 St. SW.) Registration is required. Refreshments are available on a first come, first served basis. **Please park near washroom facility in the public parking lot.**

William Watson Lodge – Providing 40 Years of Inclusion and Accessibility in Alberta Parks

Thursday, January 23, 2020 7:00 pm - 8:00 pm

Presented by Jill Jamieson, William Watson Lodge Team Lead Kananaskis Region, Alberta Parks

Learn about the history of William Watson Lodge, programming available there, and increase your awareness about how each of us is journeying to a greater understanding of inclusion and accessibility.



Writing-on-Stone/Áísínai'pi, a UNESCO World Heritage Site

Thursday, February 27, 7:00 pm – 8:00 pm

Presented by Aaron Domes – Park Supervisor at Writing-on-Stone Provincial Park, and Randy Bottle – Blackfoot Elder and Park Interpreter

Writing-on-Stone / Áísínai'pi is a continuous and sacred cultural landscape. The site was inscribed on July 6, 2019 as Canada's 20th UNESCO World Heritage Site. The Blackfoot name for this sacred cultural landscape is Áísínai'pi (meaning, "it is pictured/it is written") and refers to the abundance and diversity of rock art at this spectacular site, as well as the geological features and views that are imbedded with sacred oral traditions. Join Aaron Domes and Saa'kokoto (Randy Bottle) to learn about the rich history and values that make Writing-on-Stone / Áísínai'pi special, and receive valuable insider knowledge to help you plan your next trip to this park! Photo courtesy of Aaron Domes

Dinosaur Provincial Park

Thursday, March 19, 7:00 pm – 8:00 pm

Presented by Amber deKam – Visitor Services Outreach Coordinator, Dinosaur Provincial Park

Discover more about a UNESCO World Heritage Site that is in our very own back yard: Dinosaur Provincial Park. 75 million years ago, prehistoric rivers flowed east, depositing sand and mud, which much later would become the foundation for Dinosaur Provincial Park. This park is now known for its riparian habitat, badlands ecosystem and of course, its large concentration of dinosaur fossils from the late Cretaceous period. Drop by the ELC to learn about what makes Dinosaur Provincial Park such a special place.

For more info on upcoming presentations stay tuned to www.friendsoffishcreek.org/programs/speaker-series



QUIZ QUESTION

The Brick pathway was one of the Friends 25th Anniversary projects organized in 2017. Can you name one of the other five Anniversary projects?

The correct answers will be announced in the next issue of Voice of the Friends.

NEW STAFF MEMBER

WELCOME TO THE TEAM JULIEN

We are pleased to welcome the latest addition to our team, Julien Cossette, as the Friends' Citizen Science & Stewardship Coordinator. His six-month internship with the Friends of Fish Creek has been made possible thanks to a partnership with the United Nations Association in Canada's Canada Green Corps program, which supports youth aspiring to ignite the country's green economy and advance environmental sustainability. In his role, he will orchestrate the development of a user-friendly mobile app to help us streamline our environmental monitoring processes (i.e. Tree Wrapping, Invasive Species, Riparian Restoration, and Park Watch) and maximize the impact of these programs.

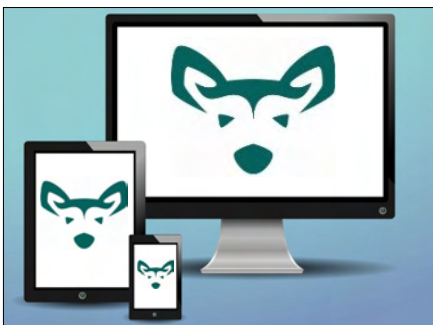
Born and raised in Quebec, Julien has been calling Calgary home since 2018 after living in the United States for a few years. While studying at the University of Chicago towards a doctoral degree in sociocultural anthropology, his thoughts would often drift away to the adjacent state of Wisconsin. Tracing with his fingers the fresh calluses and hardened blisters on his hands, he would daydream about his weekends spent restoring native oak savannas and maintaining recreational trails with simple tools. It was there, along the glaciated landscape of the Ice Age National Scenic Trail, that he found his calling in stewardship volunteer management.

His mentor often cheerfully stated that "trail building is people building," a motto that you'll regularly hear Julien adapt to conservation stewardship.



Julien is a recent graduate of the Canadian Conservation Corps and has worked for Parks Canada (Pacific Rim National Park Reserve), Alberta Parks (Castle region), and nonprofits such as the Great Divide Trail Association and the Greater Bragg Creek Trails Association. He is looking forward to engaging with volunteers, learning more about their experience and insights, and working with them to help streamline the Friends' citizen science and restoration efforts. On most weekdays, you will find him at his strategic location in the main room of the Cookhouse, and backpacking in the snowy backcountry on weekends.

A NEW KIND OF DONATION EXPERIENCE



The Friends have adopted a new CRM (Customer Relationship Management) system entitled Kindful to record donations, take payments and register people for programs. In addition to organizing and keeping track of donors, members, sponsors and other contacts, this new system will instantly issue and email tax receipts for contributions. We have begun integrating Kindful with both program registration and donation pages on our website. Please feel free to contact us if you have any questions or concerns, at 403-238-3841 ext. 1 or info@friendsoffishcreek.org. Image by Mocho from Pixabay

BRICK PATHWAY

The Friends of Fish Creek 25th Anniversary Brick Pathway has now been installed and we held the Grand Opening Ceremony on Sunday, October 27. Close to 100 community members came out to see the completed pathway and share some of the stories behind their brick. The Friends would like to express our thanks to the volunteers who helped install the pathway on October 15 and 16 - David Arnott, Bruce Mitchell and Don Barrington. Special thanks to Jeremy Bakken and AB Parks for assisting with this project. We would like to express our thanks to experienced pianist and volunteer Denise Hiebert for playing music at the Grand Opening Ceremony.



This program began in 2017 to commemorate the 25th Anniversary of the Friends of Fish Creek. There are over 250 engraved bricks along the pathway and 31 empty bricks. If you did not get a chance to dedicate a brick, now is a great time to dedicate one of the remaining bricks. Each brick is only \$250 and you will receive a tax receipt. For more information please visit <https://friendsoffishcreek.org/brick>

FISH CREEK COMMUNITY SHOWCASE

JANUARY 10 TO MARCH 27 – BETTINA SIEGER

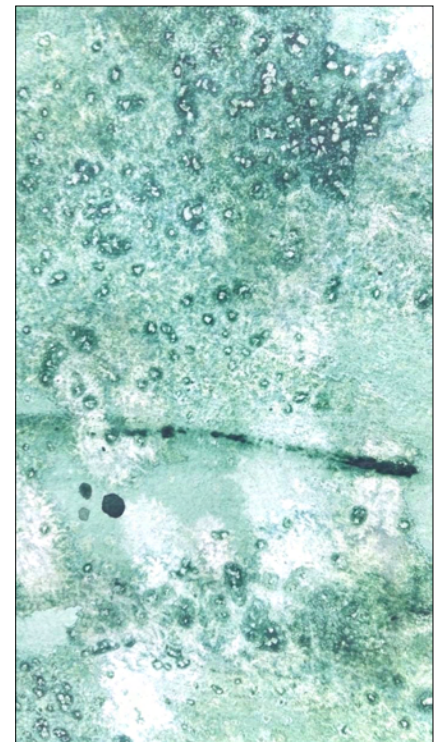
The Fish Creek Community Showcase was created in 2019 as a new opportunity to engage the public through creative collaborations with local artists and photographers. This program brings benefits to all involved. The Showcase connects local talent to the Friends' extensive network of contacts, the Friends receive a percentage of all sales of artwork, and park users have yet one more aspect of public programming to enjoy! Last year, we engaged over 350 members of the public through our Meet the Artist events and the open exhibits at the Cookhouse.

Our first Fish Creek Community Showcase of 2020 is an exhibit of up and coming artist, Bettina Sieger. Bettina is a recent graduate of Alberta University of the Arts (formerly known as the Alberta College of Art + Design). As a "Bio Artist" and an environmentalist, her passion is to bring awareness to environmental concerns through her work, and convey a better public understanding of the issues she explores. From a young age, she has been inspired and fascinated by bodies of

water and how they are home to the magical and functional world of ecosystems. Currently, she is studying our waterways and the effects that toxic blue-green algae blooms have on our ecosystems and human health.

You can drop by the Cookhouse to see Bettina's work on week days between 9:00 am and 4:30 pm (please call first to ensure the office is open).

Please stay tuned to our website for more information on future Fish Creek Community Showcase events and artists.



VOLUNTEER DINNER

AN EVENING TO CELEBRATE VOLUNTEERS!

The Friends of Fish Creek annual Volunteer Appreciation Dinner took place on the evening of Thursday, November 28 at the Fish Creek Environmental Learning Centre. Over 80 volunteers came out to enjoy a dinner, an award ceremony and a chance to meet other volunteers and members of the Fish Creek Community.



Volunteers taking part in the marshmallow game at the Friends of Fish Creek Volunteer Appreciation Dinner on November 28.

We would like to thank the Board of Directors for helping to serve food, clean up, complete set up and take down tasks, and take photos during the evening. Special thanks to David Arnott for his assistance with planning and executing the event, as well as developing the slideshow for the evening that featured many beautiful and captivating photos of volunteers in Fish Creek Provincial Park from the past year.

Julia Millen, Acting Community & Partner Relations Team Lead, spoke about the Friends volunteers and our relationship with the park. The Venturers Society of Calgary received a special gift from the Friends in appreciation of their work and partnership through out the year.

The following volunteers were honoured in these respective categories:

- Traelyn Rachar - New and Noteworthy
- Community Action Team members Angel Spasoff, Bob Bowman, Ian Richardson, Ron Deshayes - Friendmaking and Fundraising
- Ward Sanderson - Behind the Scenes
- Kevin Tanasichuk - Steward in Action
- Jennifer Solem - Community Champion
- Kathy Seaman and Leao Vermeylen - Volunteers of

the Year, the Bill Hiebert Inspiration Award. The Friends honoured lifelong Naturalist and Dedicated Birding Instructor Gus Yaki and he received a standing ovation.

The Main Dish, a division of Open Range and Big Fish restaurant group, catered the event for the third year in a row and served a delicious seasonally appropriate dinner. A Taste of Quebec

generously donated pies and other deserts for the evening.

The theme of the event was Giving Back, which relates to volunteering because all of the volunteers work hard to give back to Fish Creek Provincial Park. Funds from the sale of t-shirts, hats, travel mugs and program certificates that evening will be used towards the purchase of a truck.

The marshmallow game involved building a structure out of dry spaghetti and string that would support a marshmallow. Clearly all of the participants greatly enjoyed the game and it gave them another chance to work together and get to know each other.

MI DJ & Sound provided music and technical services for the evening, and many attendees enjoyed the Christmas music. We would to thank the following groups for helping to fund the Volunteer Dinner, Alberta Environment & Parks and the WRRP, Park People & the Nature Valley Community Program, Husky Energy, Land Stewardship Centre of Canada, Alberta EcoTrust Foundation and the Bow River Basin Council.

Thank you to all of the Friends volunteers and we look forward to working with you in 2020!

THE FRIENDS OF FISH CREEK NEED A TRUCK!

HELP US REACH OUR FUNDRAISING GOAL

In September 2019, the Friends of Fish Creek launched the Truck Fundraising Campaign and donations having been coming in at a steady rate. We are hoping to purchase a truck by spring 2020 in order to continue and enhance our conservation projects in Fish Creek Provincial Park.

Thanks to generous donors, we have raised over \$6,000 of the \$10,000 needed to purchase a reliable truck. We are getting closer to our goal and we need your help!

A truck is essential for our restoration and conservation projects in this park. Many of our Watershed Stewardship Programs like Riparian Stewardship, Tree Wrapping, Park Clean Ups require the use of a vehicle as well as other tasks throughout the year.



Up until recently, we have relied on Alberta Parks vehicle use and staff for transportation of tools, equipment, watering and other tasks. This support may not be available in the future and

securing our own vehicle would help ensure that our conservation projects will continue.

On GivingTuesday, which took place on December 3, members of the Fish Creek Community donated over \$1,750. We would also like to thank *Starbucks Canada Charitable Fund, held at Vancouver Foundation* for their generous contribution of \$1,500.

To everyone who contributed, we extend our sincere thanks. For those who have not donated, please consider this opportunity to benefit the environmental sustainability of Fish Creek Provincial Park!

Donating to this important project is now easier than ever. You can donate online at <https://friendsoffishcreek.org/programs/truck/>, call the office at 403-238-3841 ext. 1, drop by the Cookhouse or mail in a cheque to Friends of Fish Creek, ATTN: Truck Campaign, PO Box 2780 Stn M, Calgary AB T2P 2M7

NATURE CALGARY OUTINGS



These free Birding seminars will take you to various natural areas in and around Calgary where you can explore the bird species found in these diverse environments, increase your bird knowledge and have fun. Willing to share your knowledge with others? Call the Calgary Field Naturalists' Society - 403-243-2248 to specify a date and location. For a complete list of upcoming outings, visit www.naturecalgary.com

March 4, 7:30 pm - 9:00 pm. Bird Study Group, Cardel Theatre, 180 Quarry Park Blvd SE. Throughout 2019, Gavin McKinnon traveled throughout Alberta looking for birds. His goal was to see 300 species within the province in one calendar year. Throughout the year he visited some very remote and birdy locations. Come to hear all the details about the birds and the places he saw during his "Big Year".

ROCK DAMS IN FISH CREEK

ROCK DAM RESEARCH PROJECT UPDATE

Shana Barbour, Program Coordinator, Friends of Fish Creek



Working in such a busy, urban park, the Friends are often presented with new and interesting issues that we would love to help address, but do not always have the capacity to do so. Every once in a while, however, capacity and opportunity meet, allowing us to embark on something new!

For many years, we have fielded questions from our Park Watch Steward volunteers about the presence of recreational rock dams across Fish Creek. These are structures that people build, often as a family activity and a way to connect with nature and the creek itself. Rocks are moved side by side to create a physical structure; sometimes a dam, or a bridge-like passage from one side of the creek to the other. While most people wouldn't give a second thought to this activity, it is possible that each dam - or the cumulative number of dams built over time - could have a negative impact on the watershed. However, due to a lack of research existing on this subject, we have always been a bit unsure as to the messaging we should convey to the public.

2019 presented an opportunity for us to dive into this topic a bit further, thanks to research conducted by

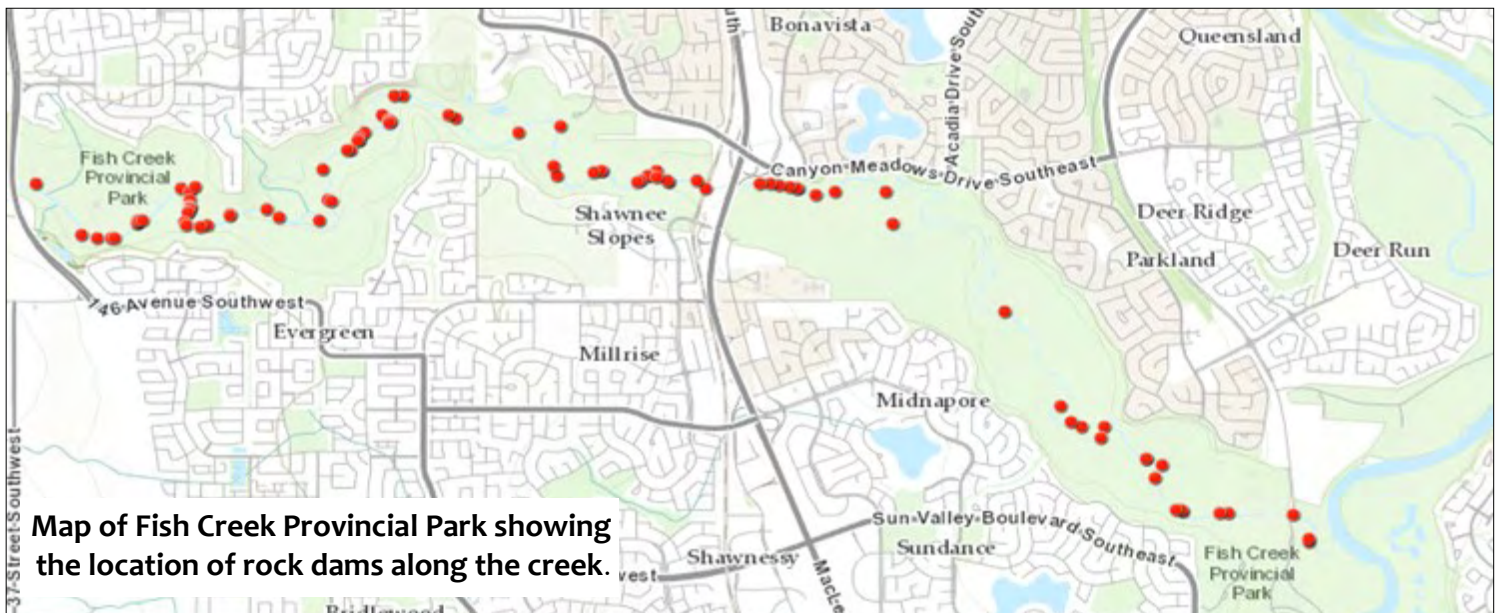
Royal Roads University student, Jenny Atamanik. Jenny's research focused on investigating the potential impact of these structures through a look at water quality and physical stream measurements, with the support of Friends' volunteers who were trained to help her in the field. Data was collected on turbidity (the amount of sediment held in solution), dissolved oxygen, pH, temperature and conductivity, all of which are indicators of water quality. Wetted width (the linear distance in cross section across a stream that is in contact with water) and maximum depth measurements were also taken, to help determine the physical impact - if any - on the structure of the streambank. All measurements were taken up and downstream of several dam sites on a weekly basis in June and July.

The research revealed that 91 rock dams exist along the 14 km stretch Fish Creek that was studied. Clusters of these structures were often found near easily accessible areas close to parking lots and paved pathways (see map on next page). Increased stream width and decreased stream depth was found downstream of the dams, however pH, dissolved oxygen, conductivity and temperature did not vary significantly.

Cont'd on next page

ROCK DAMS IN FISH CREEK

cont'd from previous page



Map of Fish Creek Provincial Park showing the location of rock dams along the creek.

While this may seem to be somewhat inconclusive, this study did highlight areas where further research could be conducted:

- Since most field measurements were taken during peak flow of Fish Creek, testing for longer periods of time, into the fall, may give a better idea of the impact of these structures during non-peak flow times. It is possible that areas below rock dams during non-peak flow times could be more susceptible to increased temperatures and decreased dissolved oxygen, both of which could have lethal impacts for thermally sensitive fish species, such as rainbow trout.
- Studying benthic invertebrates and fish species - neither of which were included in this study - could help determine if rock dams influence significant change in the biotic community structure as a whole.
- Additional research would allow us to learn more about the cumulative impacts of such a large number of rock dams along the creek, as well as potential impacts on fish communities if these structures are to be left in place or removed.

Possibly the most meaningful finding of this project for the Friends was the realization that other North American parks have chosen to take a precautionary

approach with respect to this issue. In spite of there being little conclusive research on this subject, the Washington Department of Fish and Wildlife and Parks Canada in Waterton Lakes National Park ask park visitors not to build these structures, and to report rock dam locations for possible removal by their staff. Moving forward, the Friends will also support the “leave no trace” approach to park use, advising park users not to build rock dams. We also hope to play a supportive role in furthering this research if the opportunity presents itself, particularly to help us understand if the removal of these structures is recommended.

This project was funded in part through the Watershed Stewardship Grant, a program of Land Stewardship Centre financed by Alberta Environment and Parks. The [Land Stewardship Centre](#) generously provided funding for research equipment and kits for 30 Park Watch Steward teams. These volunteers take on the essential role of connecting with the public about important issues like this, and are integral to the sharing of this messaging and the identification of new rock dam locations. We are also grateful for the support and direction of [Trout Unlimited Canada](#) biologist, Eliot Lindsay, who volunteered considerable time on this project.



MEASURING THE DEEPER IMPACT OF VOLUNTEERISM

Shana Barbour, Program Coordinator, Friends of Fish Creek

As a non-profit organization, we are often asked to explain the impact of our work. What is the impact we have on the park landscape through our stewardship programs? Do park visitors learn about park issues and change their behaviour as a result of our messaging? How does our work impact those communities in close proximity to the park? Most often, these questions come from granting organizations who want to ensure they are funding meaningful programs.



Shana Barbour - Program Coordinator, Naomi Parker - Board Member, and Nic Blanchet - Executive Director teamed up for Project Impact in 2019.

In most cases, the definition of impact is equated to numbers and statistics, but these metrics do not tell the whole story. For instance, if we pull 1000 kg of weeds in a season, how does this lend itself to meaningful, enduring change on the park landscape over time?

Through Project Impact, we worked closely with facilitator Steve Patty of Dialogues In Action and eight other Calgary non-profit organizations to learn a different and more meaningful approach to evaluation, that took us far beyond numbers and statistics that we have focused on in the past to learning how to reframe evaluation and get to the heart of what really matters. We chose to dive into an aspect of our programming that is integral to our work – our volunteers – to learn more about how they are personally impacted by their involvement with the Friends.

The biggest insight gleaned from our research was that – in spite of always considering ourselves an environmental organization - the deep impact that volunteerism has on people

has encouraged us to think of ourselves as more of a human organization, due to the many and often deeply significant changes that some people involved with us have experienced. We also learned how important our personal relationships with volunteers are to them and – for many – the feeling of belonging and community that has resulted from their connection to our work.

The Friends will spend some time in 2020 reviewing and discussing the best way to implement the research findings. The findings of our research and those of the other organizations involved in Project Impact were published in a book that is available through Amazon.

We would like to express our deep thanks to: Steve Patty and Jessamyn Luiz of Dialogues in Action, for their expertise, guidance and support; Tanis Cochrane of [YMCA Calgary](#), for coordinating this project; and to the [Calgary Foundation](#), for providing the funding that allowed each non-profit organization to participate in a project that will impact how we conduct meaningful program evaluation in the future.

Several important recommendations came out of the Volunteer Impact Research, including:

- the importance of making more time to connect personally with our volunteers
- ensuring that we maximize our ability to provide diverse opportunities that make the most of volunteer skills/abilities
- ensure we diversify our approach to volunteer recognition, so that all volunteers are meaningfully recognized for their contributions.

ESTATE PLANNING

LEAVE A LASTING LEGACY IN YOUR WILL TO BENEFIT FUTURE GENERATIONS!

Remembering family in your will is most likely an important part of your final wishes.

Considering the Friends of Fish Creek in your legal will or through other philanthropic means is one of the best ways to ensure that future generations will enjoy this breathtaking natural area as much as you and your family do.



For over 25 years the Friends have collaborated with park management, volunteers, community organizations and members to raise awareness about environmental stewardship in Fish Creek Provincial Park.

Legacy gifts (Planned Giving) allow you to make a future donation to the Friends of Fish Creek without affecting your current financial circumstances. Regardless of the size of your planned gift you can be sure that your gift will continue to make a lasting and vital impact on the park that you care for. Giving options may even substantially reduce your taxes. Your legacy will help ensure that the important programs operated or sponsored by the Friends of Fish Creek can continue to be maintained and expand.

You can leave the Friends of Fish Creek a gift (bequest) in your will either as a specific amount or as a portion of your assets. If you are considering leaving a charitable gift for the Friends of Fish Creek in your will, it is best to designate a lump-sum or fixed amount of shares, rather than a percentage of assets. This will simplify the process of fund allocation for both the Friends and the executor of your estate.

Did you know that in recent years, tax legislation has been amended to eliminate capital gains tax on

donations of stock to registered charities? You, as a donor, will not pay any tax on the gain and a tax receipt will be provided for the full value of the donation. With the elimination of capital gains tax on this type of donation, the incentive to donate listed securities becomes significant.

Life insurance also allows you to make a major donation at a modest cost. A policy, which names the Friends of Fish Creek as both beneficiary and owner may be purchased or amended. You then receive a tax receipt for the cash surrender value of the policy, accumulated dividends and interest. Further payments will also entitle you to a tax receipt.

Having a trustee manage your estate after death may also be a viable option. In your will, you can bequeath funds to charities of your choice or arrange to have donations made regularly from your estate. Your estate will benefit from tax advantages on the portion left to charity. A tax receipt will be issued for the present value of the assets placed in trust.

A planned gift in your will is a wonderful way to help protect and preserve this park so that future generations can enjoy it as much as you and your family do. By including the Friends of Fish Creek in your final wishes, you can leave a lasting legacy for this park, this city, your grandchildren's children and beyond.

For more information, contact your financial planner or the Friends of Fish Creek at 403-238-3841 ext. 4 or visit <https://friendsoffishcreek.org/estate-2/>

Friends of Fish Creek Provincial Park Society
Charitable Registration #891199747 RR0001

MEMBERSHIP

RENEW YOUR COMMITMENT TO FISH CREEK PROVINCIAL PARK

Annual Society fees are now due and we are currently renewing memberships for the October 2019-September 2020 season.

Membership benefits include admission to the fascinating Fish Creek Speaker Series presentations, a valuable discount on the popular Birding Courses (*course participants pictured here*), a discount at local businesses like the Wild Bird Store and Kensington Art Supply, the newsletter *Voice of the Friends* and regular updates on Friends of Fish Creek programs, courses, events and activities in and around the park.

As an alternative to annual membership renewals, you may be interested in the Park Protector monthly donor program, which might suit your busy lifestyle a little better than standard membership. Through the Park Protector program a regular contribution will be



automatically and effortlessly withdrawn monthly from a credit card of your choosing. Your donation will support the Friends of Fish Creek and our conservation efforts here in Fish Creek Provincial Park, and you will receive an annual tax receipt.

Park Protectors also receive monthly updates on how their donation is making a difference in the park, as well as invitations to special events. For more information about becoming a Park Protector, please contact the Friends of Fish Creek or visit friendsoffishcreek.org/park-protector-signup

Renew your commitment to Fish Creek through the website at friendsoffishcreek.org/membership, at the Cookhouse, by mailing the form below, or by calling in with a credit card number to 403-238-3841 ext.1.

Membership Form -

The Friends of Fish Creek, PO Box 2780 Stn M Calgary, AB T2P 2M7
403-238-3841 info@friendsoffishcreek.org www.friendsoffishcreek.org

For info about the Park Protector program visit www.friendsoffishcreek.org/park-protector-signup

Name: _____ Phone: _____

email: _____ Address: _____

City and Province: _____ Postal Code: _____ Work place (optional): _____

☐ Please send me information about leaving a gift in my will

Membership: Individual ☐ \$35.00 Family ☐ \$45.00

Senior (+60 years of age) Individual ☐ \$25.00 Family ☐ \$30.00

Donation: ☐ \$25 ☐ \$50 ☐ \$100 ☐ Other: \$ _____

Please Fill out: Membership \$ _____ Donation \$ _____ Total \$ _____

To pay online: www.friendsoffishcreek.org/membership or donate on CanadaHelps.org

(Charitable Registration #891199747 RR0001)

Signature of donor or member: _____

Applicants must be 18 years of age or older to become members. Tax receipts will be issued for donations of \$10.00 or more or if requested.

This issue of the Voice of the Friends is dedicated to Sue Konopnicki, a long-time Friends volunteer and avid Birder. In 2017, Sue helped to launch the Kids Birding Program to educate children about birds and foster a love of nature in them. The Kids Birding Program will continue and the impact of Sue's efforts will be felt for many years to come here in Fish Creek Provincial Park.

Thank You Supporters!

Bobcat Level:



TD Friends of the Environment Foundation

Beaver Level:

Starbucks Canada Charitable Fund, held at Vancouver Foundation

QUIZ ANSWER - OCT / NOV ISSUE

This finch-like bird is mostly grey, brown and white but has vibrant yellow plumage at the base of the tail and on the wings. Can you identify this bird?

The correct bird is the Pine Siskin. The Pine Siskin is one of the smallest of the finches at only 11-13 cm in size. Although this bird does resemble a sparrow and may act like a goldfinch, its yellow plumage and loud distinctive call provide evidence of its identity. The Pine Siskin frequents natural wooded areas, grasslands and meadows as well as man-made areas like roadways and agricultural sites. This energetic bird has been seen in Shannon Terrace in Fish Creek Provincial Park, Carburn Park, Griffith Woods Park and South Glenmore Park. The Pine Siskin is generally seen in groups of 10 - 15 birds, but has also been seen in the hundreds. Learn more about the Pine Siskin and many other birds through the Spring Birding Course beginning March 30.

Birds of Alberta, Fisher and Acorn

2020 EXECUTIVE

Chair	Bob Morrin
Vice-Chair	David Mitchell
Treasurer	Phil Greer
Governance Chair	Henry Villanueva
Director at Large	Stewart Scott
Director at Large	Robert Bell
Director at Large	Kari Horn
Director at Large	Naomi Parker
Park Liaison	Julia Millen

STAFF

Nic Blanchet, Executive Director
nic@friendsoffishcreek.org

Katie Bakken, Program Coordinator
katie@friendsoffishcreek.org

Shana Barbour, Program Coordinator
shana@friendsoffishcreek.org

Chris Lalonde, Communications Coordinator
chris@friendsoffishcreek.org

FRIENDS OF FISH CREEK ONLINE STORE

- New Friends of Fish Creek t-shirts, \$20.00 each (*pictured here*)
- New Friends hats, \$20.00 each
- The art of Bettina Sieger (*available soon*)
- Capture Nature framed photos, \$45.00
- Friends of Fish Creek Bike Bells, \$6.00 each or 2 for \$10.00
- Friends Travel Mugs - 14 oz, Stainless Steel with foam insulation and swivel lid, \$20.00
- 25th Anniversary Signature Artwork, Limited Edition Print by Jim Pescott, \$275.00
- Keating Family Portraits - Certificate for Portrait Capture Session and 12" painted portrait with local artist Keating, \$3000.00 Value for only \$1020.00

And much more!

